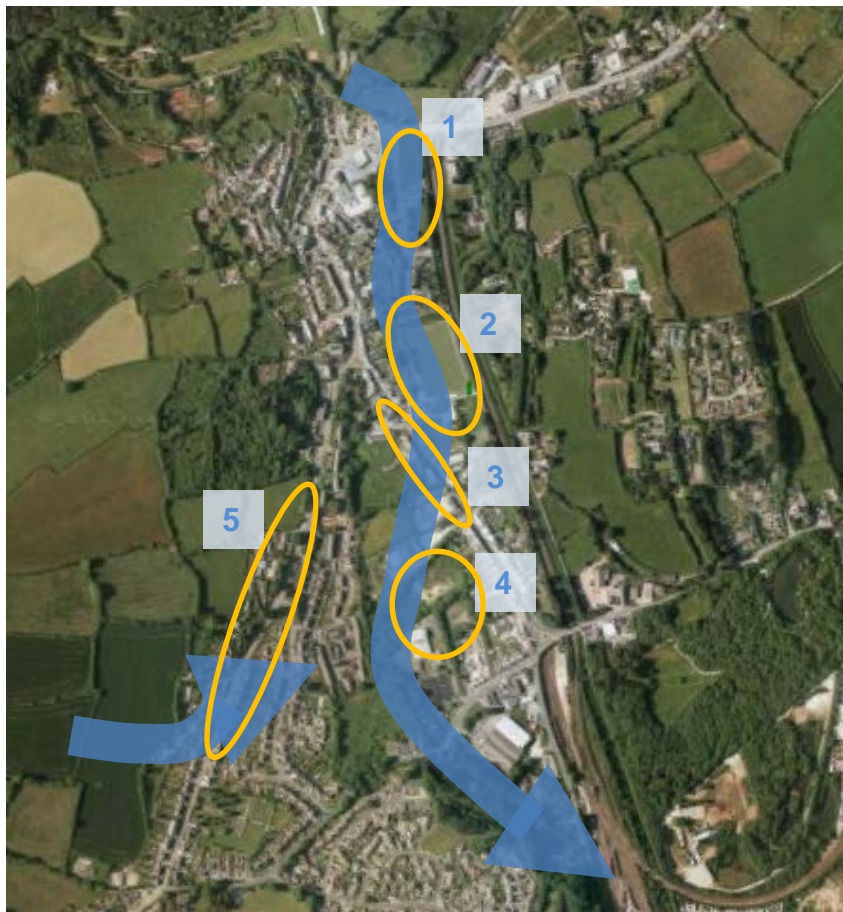


Managing Water in Built Up Areas

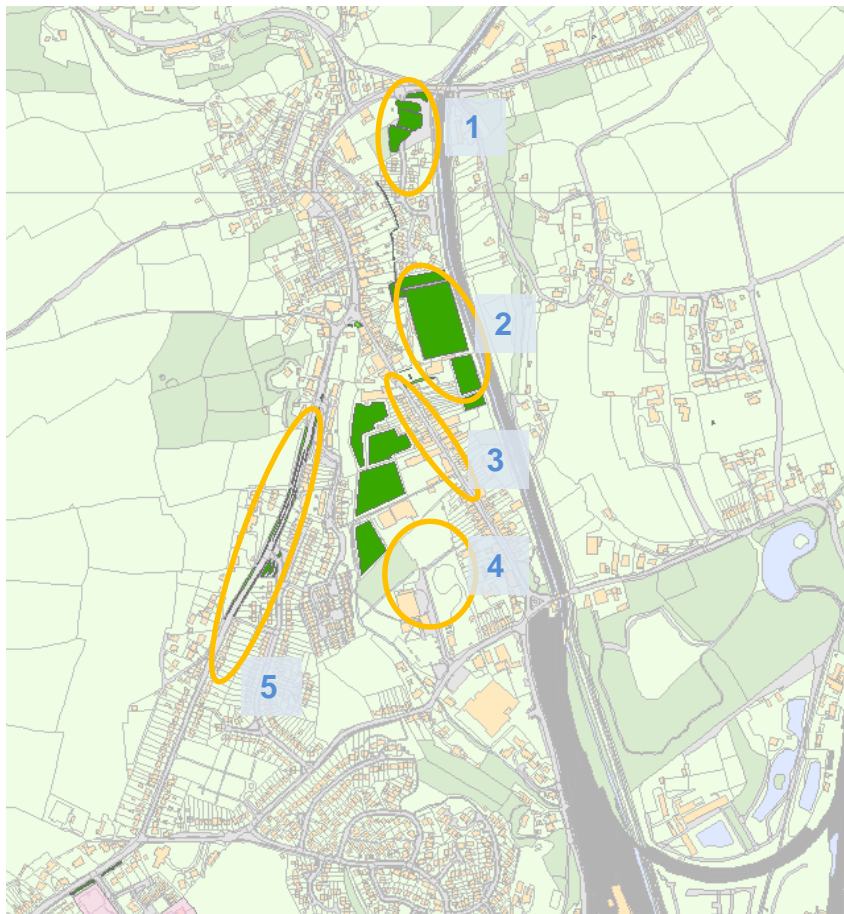
Natural flow pathways St Blazey





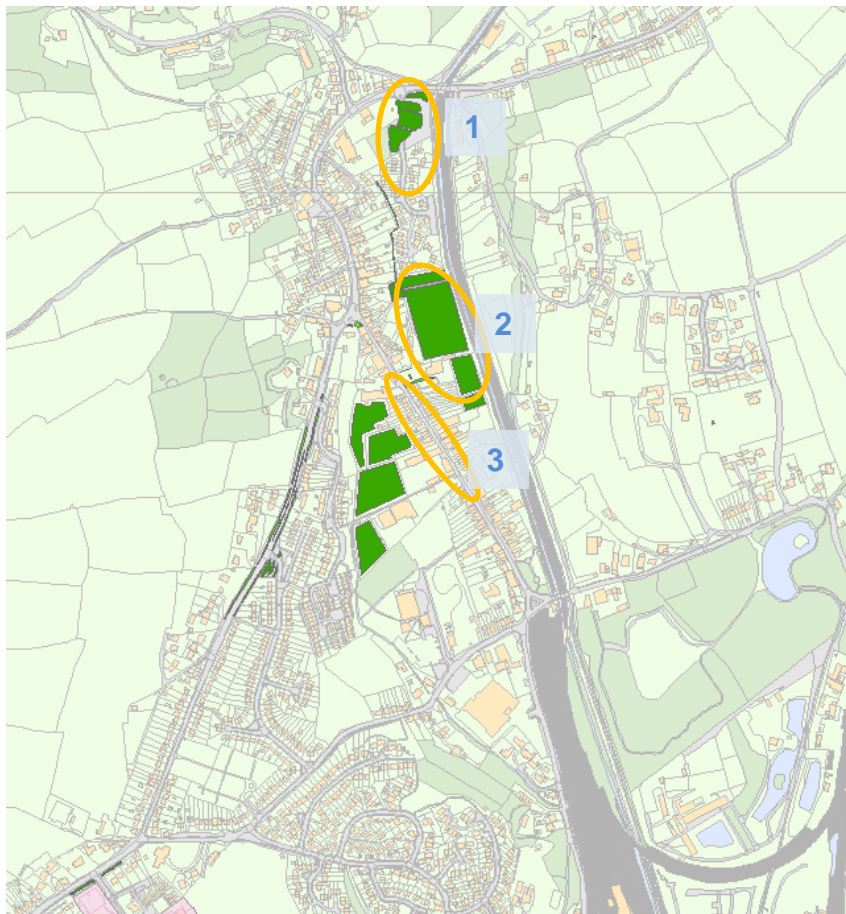
Key Sites St Blazey

- 1 Aberdeen Close
- 2 Football Ground Area
- 3 Station Road
- 4 'Heart of St Blazey'
- 5 A390 Road Corridor



Key Sites St Blazey

- 1 Aberdeen Close
- 2 Football Ground Area
- 3 Station Road
- 4 'Heart of St Blazey'
- 5 A390 Road Corridor



Key Sites St Blazey

1

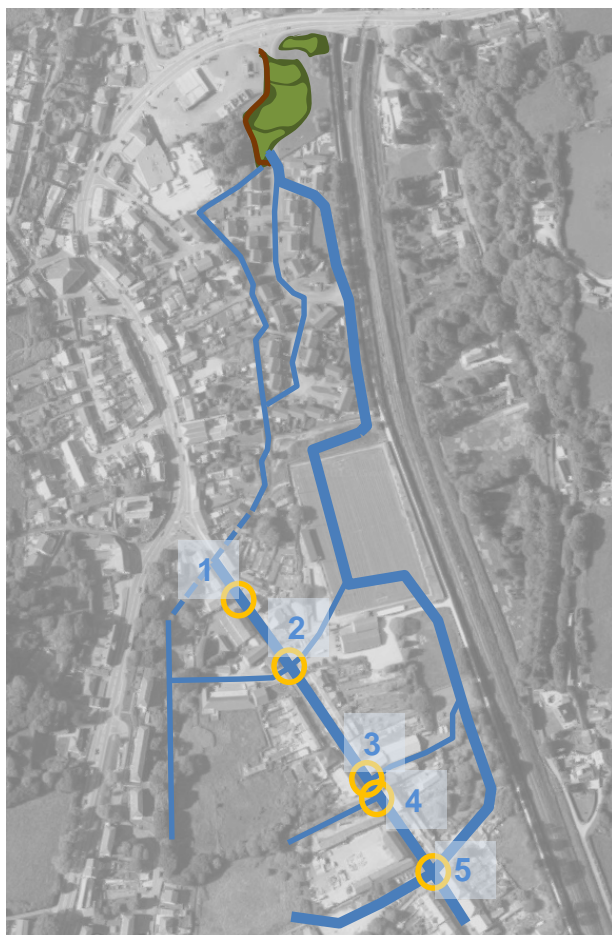
Aberdeen Close

2

Football Ground Area

3

Station Road



1



St Blazey Stores
Closest to the St Blazey Stream
Downstream of culvert

2



Furniture Celler
Opposite football club car park
Adjacent land for sale?

3



Four Ways Youth Centre
Link to football club site
Challenges in flow management

4



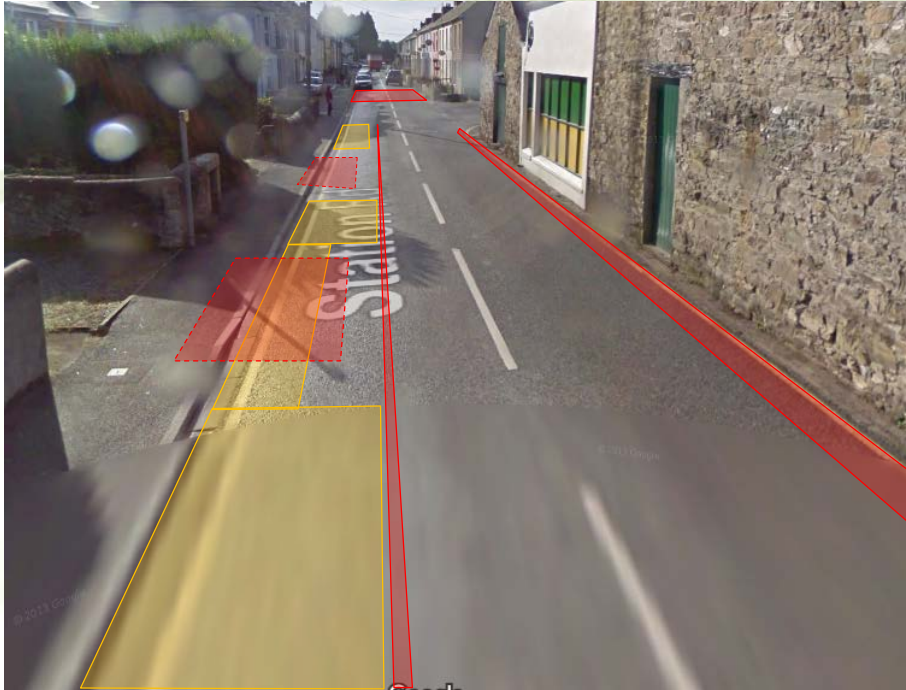
Adjacent to Travis Perkins
Links to flood meadow
Listed building

5



Town Council Car Park
Level pathway to St Blazey Stream
Opposite potential driveway flow path

Station Road: Green, low flow treatment and flood pathway



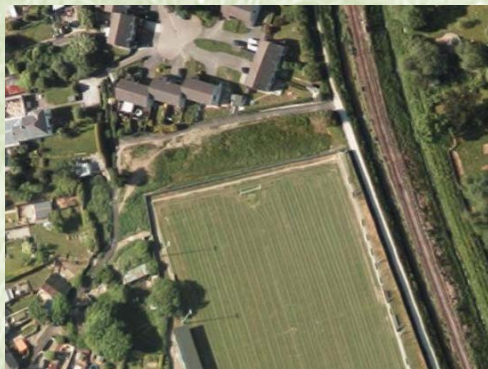
Aberdeen Close: Public Open Space



Aberdeen Close: Public Open Space



Football Ground Area: Community space / Pocket park



Questions

Spare slides..... Just in case!

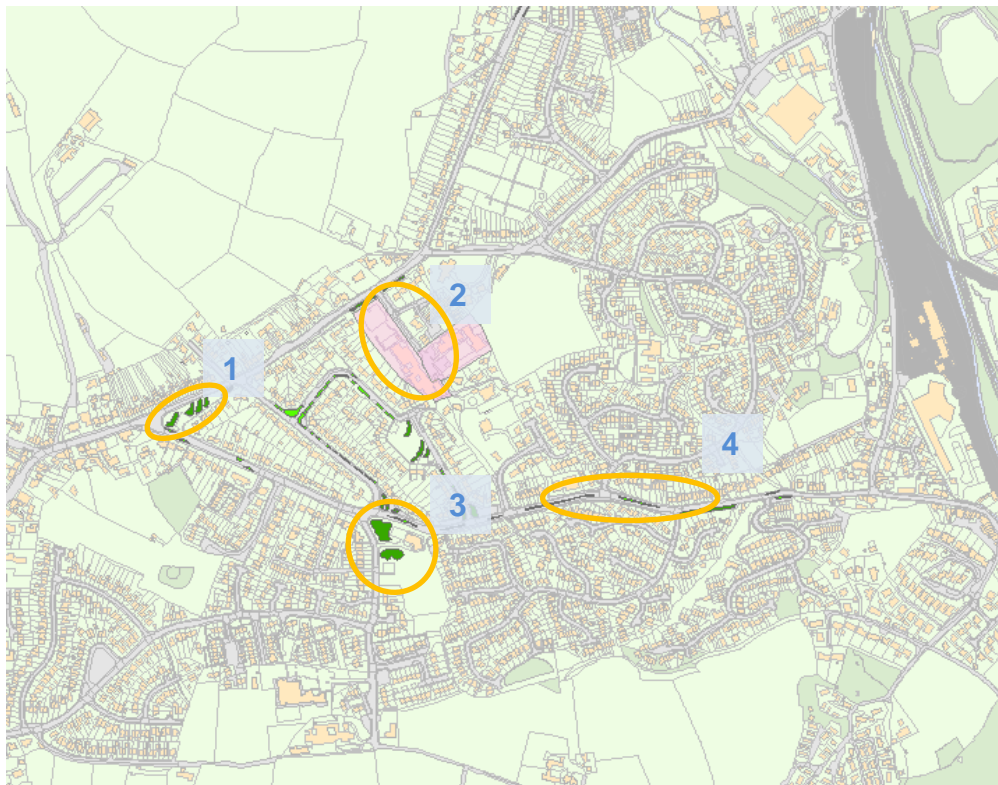


Natural flow pathways Par Lane



Key Sites Par Lane

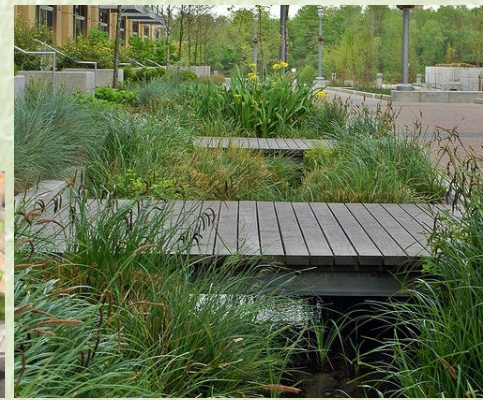
- 1 A390 Road Corridor
- 2 Doubletrees School and Hostel
- 3 The Burrows
- 4 Par Lane



Key Sites Par Lane

- 1 A390 Road Corridor
- 2 Doubletrees School and Hostel
- 3 The Burrows
- 4 Par Lane

Heart of St Blazey: Making space for water, high amenity value.



A390: Central and Lateral Raingarden, Swale



Par Lane: Central Raingarden



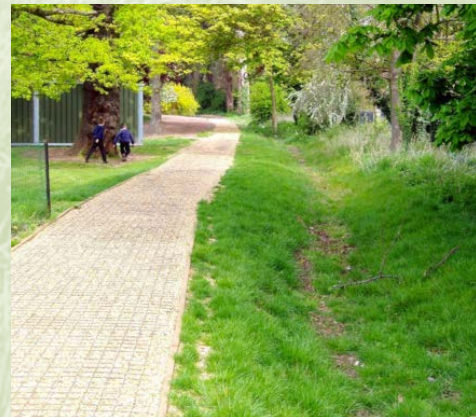
Par Lane: Lateral Raingarden



Par Lane: Lateral Raingarden, Swale



Doubletrees: School and Hostel 'SuDS Strategy'



Penarwyn Road: Raingardens, swales



Bob's Road: Raingardens, swales (with check dams)

